

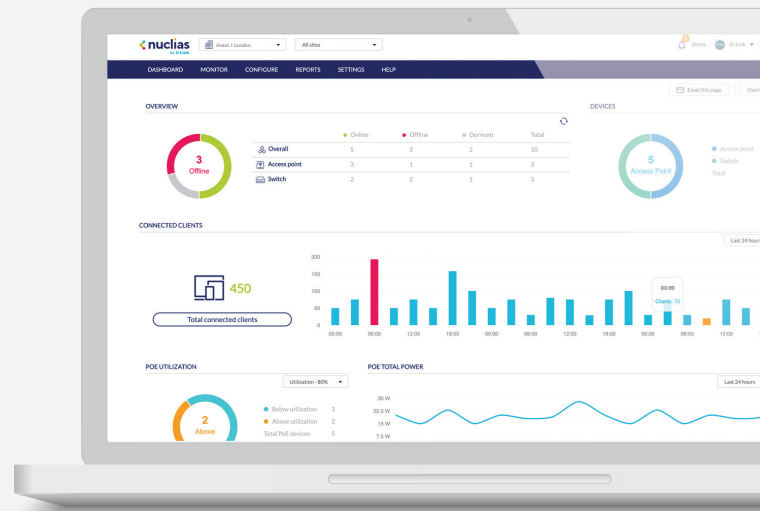
Nuclias Cloud-Managed Wave 2 Access Points

DBA Premium Series



Nuclias Cloud Overview

Nuclias Cloud is D-Link's complete, cloud-managed networking solution. It allows organizations with any level of IT resources the convenience of simple network deployment and configuration. Management and monitoring is as easy as ever. Troubleshooting is quick and painless. With Nuclias Cloud, scaling is accessible and can be done on an ad hoc basis. It's professional-grade networking, without the need for networking professionals.



▲ Intuitive Dashboard Interface

Solution Features

- » Cloud Management
- » Zero-Touch Deployment
- » Intuitive Interface
- » Unlimited Scalability
- » Real Time Traffic Reporting & Analytics
- » Device Geolocation with Google Maps
- » Visualized Floor Maps
- » Automated Monitoring & Alerts
- » Multi-Tenant & Role-Based Administration
- » Band Steering
- » Bandwidth Optimization
- » Searchable Event Log and Change Log
- » Auto Channel Management
- » Authentication via Customizable Captive Portal, 802.1x and RADIUS Server
- » Social Login for Guest Wi-Fi Access
- » End-to-End Encryption
- » Over-the-Air Firmware Upgrades

Solution Benefits

1 / End-to-End Solution

Nuclias Cloud is a complete Cloud-based WLAN infrastructure solution that provides end to end control over every network device, on any site, in your cloud-managed network. D-Link's wide range of compatible devices offer a variety of capabilities at different price points. As a business driven solution, Nuclias includes a variety of enterprise tools. A customizable captive portal allows for a branded Wi-Fi experience, while reporting & analytics provide you the opportunity to better understand your network.



2 / Cloud Management

Cloud-based network management offers the flexibility and convenience you need. Admins can carry out various tasks using D-Link's centralized management platform via browser or app, anywhere with an internet connection. Unlimited device and site scalability, along with multisite management, allow you to manage a worldwide network from a centralized location. Zero Touch Deployment does away with repetitive device configuration by remotely pushing settings to devices. Furthermore, devices can be managed in batches or individually for more precise control. These features, plus more, all consolidated on a unified platform make management as simple and as hassle-free as it should be.



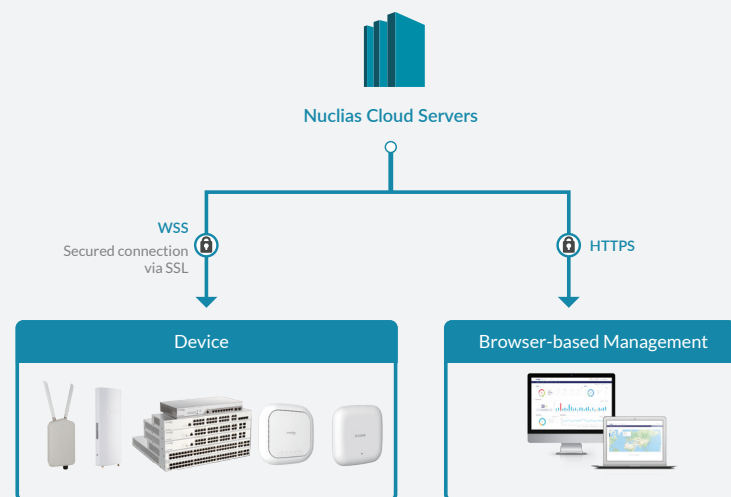
▲ Deployment Scenarios

3 / In-Depth Analytics & Automated Reporting

Nuclias Cloud delivers a deeper understanding of your network and its users through automated traffic analytics and status reports. Traffic can be viewed on a network-wide scale, or down to individual devices. Insights derived from these reports can be used to further drive business value.

4 / Peace-of-Mind

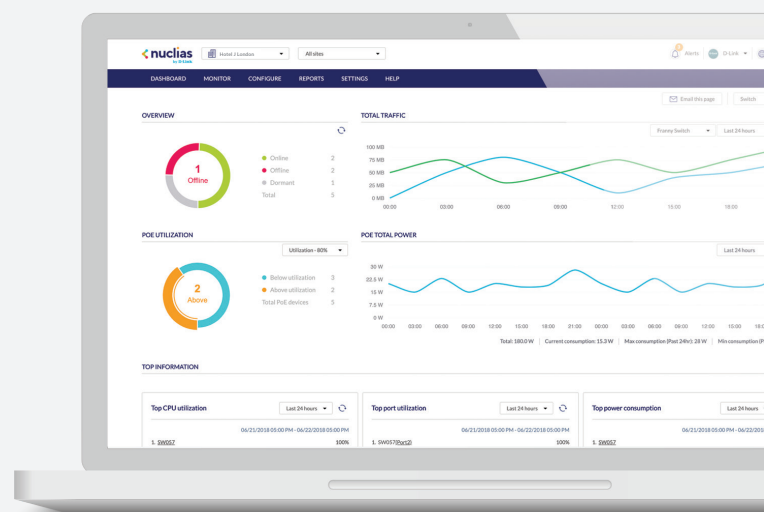
Nuclias Cloud carries a 99.9% reliability SLA (Service Level Agreement) that ensures a constant access to cloud services. Device operation will not be interrupted in the event that cloud services are unavailable. End to end encryption, role & privilege-based access control, amongst a host of other security features work together to preserve the integrity of your network. Automation capabilities provide an additional level of convenience, including control of network parameters, alerting, reporting and firmware updates.



▲ End-to-End Encryption

5 / Ease of Use

Nuclias Cloud has an intuitive interface that is designed to maximize your productivity. Admins can access easy to grasp, at-a-glance details of their network environment. Batch configuration and multitenancy support streamlines administrators' work. Meanwhile, social-login, airtime fairness and bandwidth priority make life easier for users.



▲ Statistics - Network Analytics

Product Overview

The DBA Premium Series Nuclias Cloud-Managed Wave 2 Access Points are deployed as pre-managed, zero-configuration access points controlled through the D-Link Nuclias Cloud¹. These are the best-in-class indoor access points designed specifically for enterprise environments. With next-generation 802.11ac Wave 2 dual-band concurrent 2.4 GHz and 5 GHz radios, the DBA Premium Series offers high combined data rates to wireless clients allowing for lightning-fast access to bandwidth-intensive applications such as data, voice, and video streaming.

Best-in-Class Built for Enterprise AP

- IEEE 802.11ac Wave 2 wireless
- Supports IEEE 802.3at Power over Ethernet (PoE)
- IEEE 802.3az Energy-Efficient Ethernet (EEE)
- Integrated DHCP server
- Supports Link Aggregation
- Allows a high number of concurrent users
- MU-MIMO support
- UL2043-certified chassis (Plenum-rated SKU)

D-Link Smart Antenna (DBA-2620P)

- Selects optimal radiation pattern for each client
- Uses digital beamforming to enhance the antenna gain and achieve optimal throughput
- Supports multiple radio patterns to dynamically adapt to different kinds of environments
- Fast channel and bandwidth selection features find the optimal channel with the least interference

Enterprise Security

- Personal and Enterprise versions of WPA/ WPA2 (802.11i)/ WPA3™
- SSID/Guest/Station Isolation
- IP/MAC address filtering
- Captive Portal (Facebook, Google, Line, Weibo, E-mail authentication)
- Supports RADIUS client and Cipher negotiation

Tri-Band WiFi (DBA-2720P)

- 1 x 2.4 GHz and 2 x 5 GHz wireless bands to accommodate for an increasing number of devices
- Unload older 802.11b/g/n devices on the 2.4 GHz band
- Enjoy seamless bandwidth-intensive applications such as HD video streaming, VoIP, and file sharing on 2 x 5 GHz bands
- Utilizes intelligent band steering technology for efficient load balancing and workload distribution

Technical Specifications

General

Model	DBA-2520P	DBA-2620P	DBA-2720P	DBA-2820P
Interfaces	2 x 10/100/1000 Mbps Ethernet port 1 x RJ45 Console port IEEE 802.11a/b/g/n/ac Wave 2 wireless			
Standards	IEEE 802.11a/b/n/g/ac Wave 2 IEEE 802.3az Energy-Efficient Ethernet (EEE) IEEE 802.3at Power over Ethernet (PoE) IEEE 802.3i/u/ab IEEE 802.3x Flow Control			
Antenna	Internal omnidirectional antennas » 2.4 GHz: 3 dBi » 5 GHz: 4 dBi	Internal omnidirectional antennas » 2.4 GHz: 5 dBi (variable) » 5 GHz: 6 dBi (variable)	Internal omnidirectional antennas » 2.4 GHz: 3 dBi » 5 GHz(1): 4 dBi » 5 GHz(2): 4 dBi	Internal omnidirectional antennas » 2.4 GHz: 3 dBi » 5 GHz: 4 dBi
Maximum Output Power	2.4 GHz: 25 dBm 5 GHz: 25 dBm	2.4 GHz: 26 dBm 5 GHz: 26 dBm	2.4 GHz: 26 dBm 5 GHz (1): 26 dBm 5 GHz (2): 26 dBm	2.4 GHz: 26 dBm 5 GHz: 26 dBm
Data Signal Rate ²	2.4 GHz: Up to 600 Mbps 5 GHz: Up to 1299 Mbps	2.4 GHz: Up to 400 Mbps 5 GHz: Up to 867 Mbps	2.4 GHz: Up to 400 Mbps 5 GHz (1): Up to 867 Mbps 5 GHz (2): Up to 867 Mbps	2.4 GHz: Up to 800 Mbps 5 GHz: Up to 1733 Mbps

Functionality

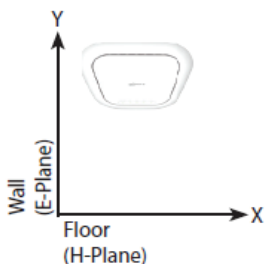
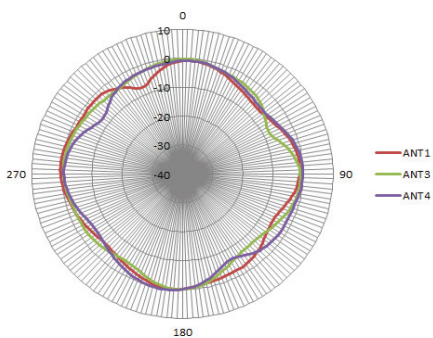
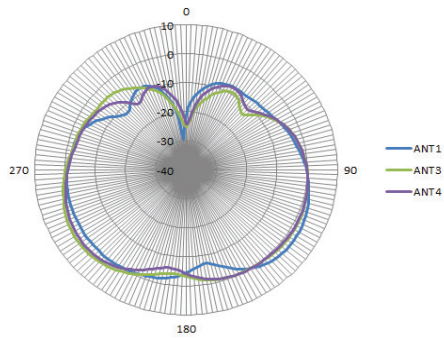
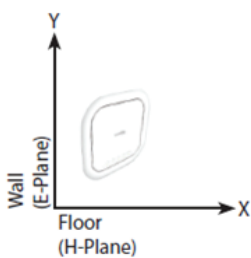
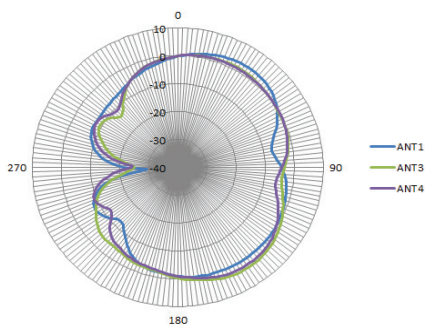
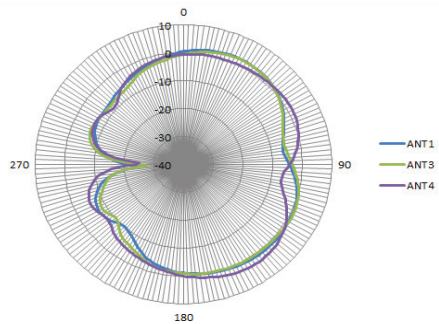
Security	WPA3-Personal/Enterprise WPA2-Personal/Enterprise WPA-Personal/Enterprise MAC address filtering SSID isolation Guest isolation Captive portal Station isolation			
Maximum SSIDs	Supports up to 16 SSIDs per device » Up to 8 SSIDs per wireless band		Supports up to 24 SSIDs per device » Up to 8 SSIDs per wireless band	Supports up to 16 SSIDs per device » Up to 8 SSIDs per wireless band

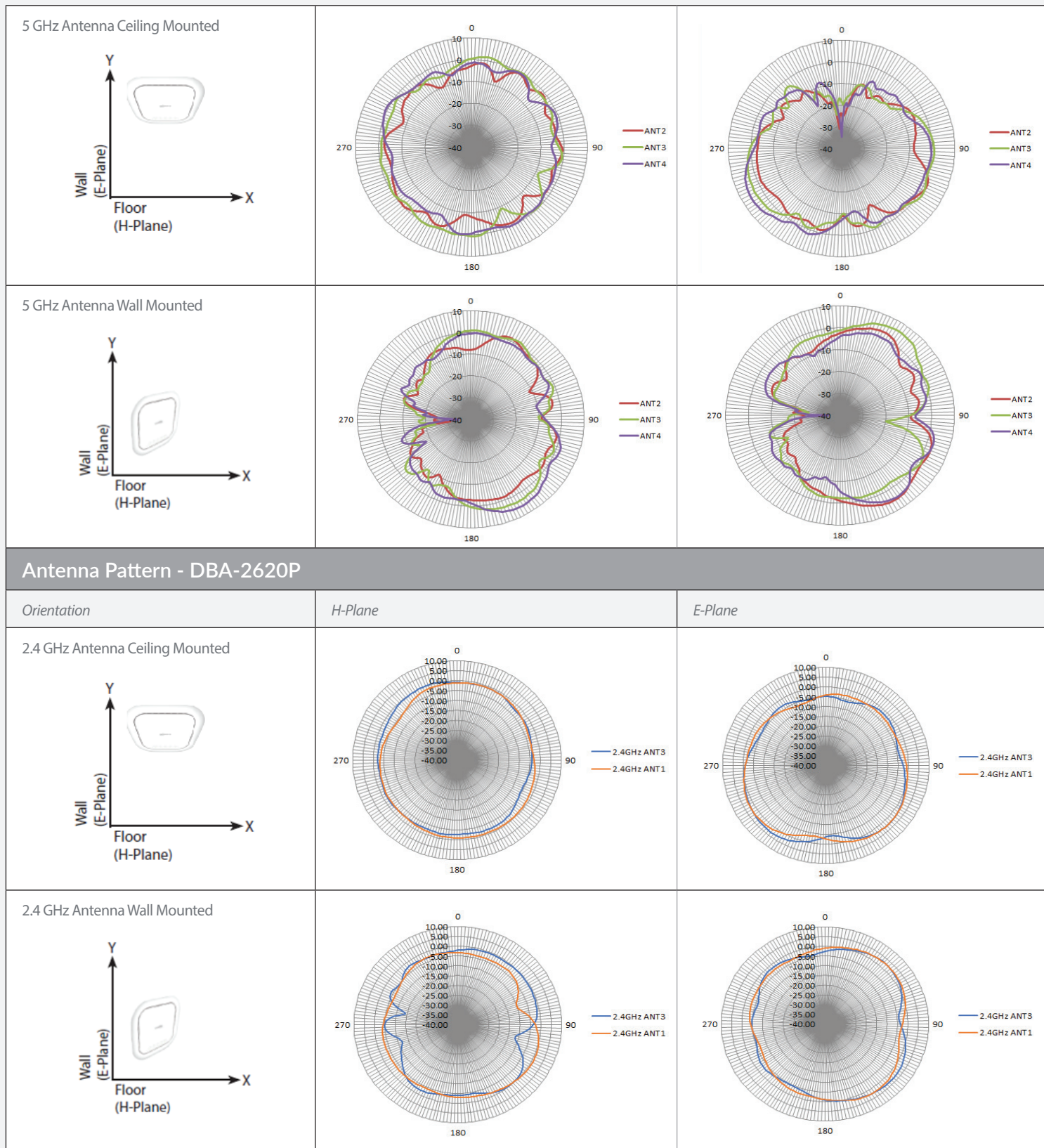
Physical

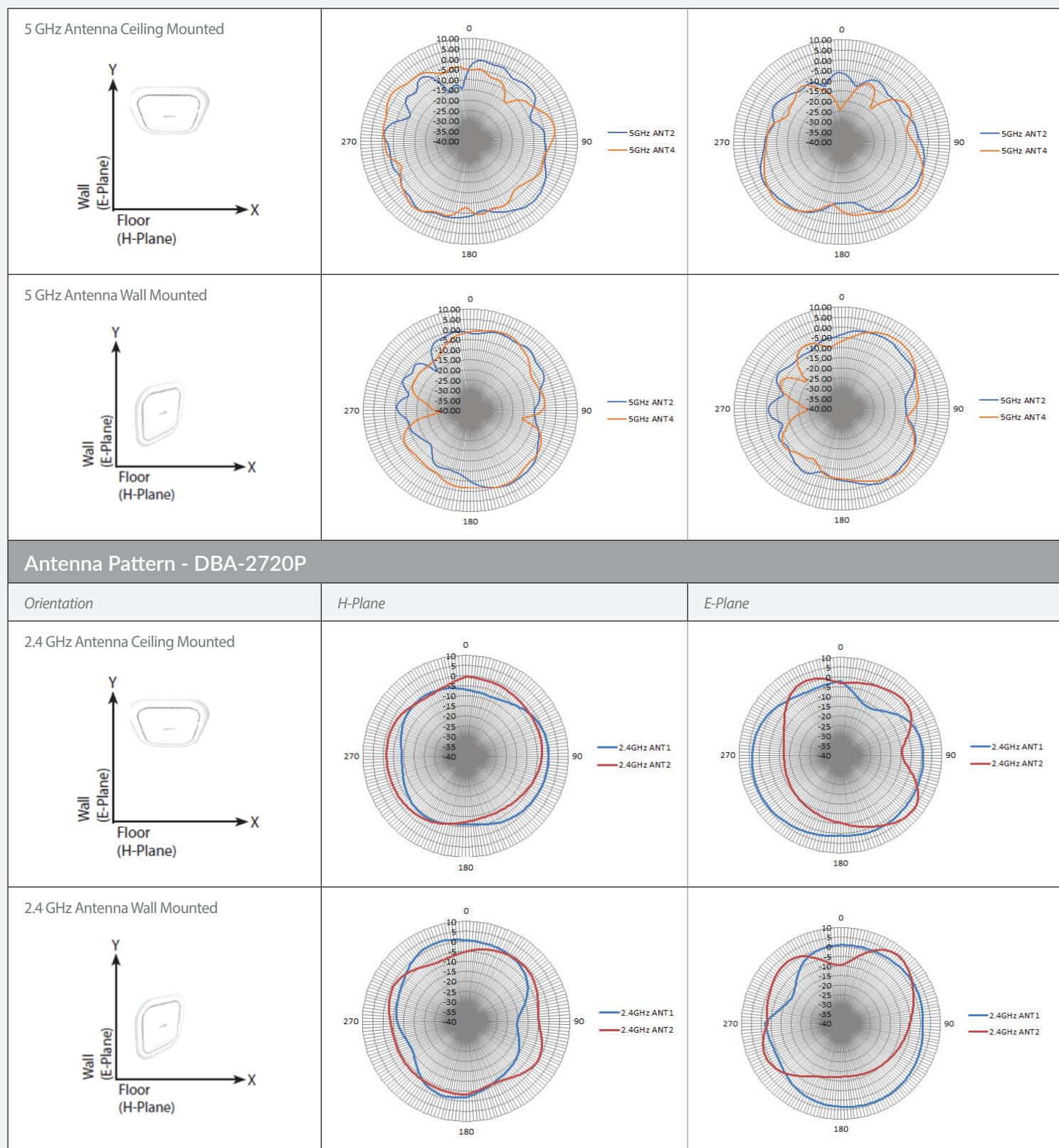
Dimensions (L x W x H)	224.5 x 223.85 x 50 mm (8.83 x 8.81 x 1.97 in)	224.5 x 223.85 x 54.75 mm (8.83 x 8.81 x 2.16 in)	223.6 x 222.2 x 50 mm (8.80 x 8.75 x 1.97 in)	224.5 x 223.85 x 50 mm (8.83 x 8.81 x 1.97 in)
Weight (without mount)	811 g (1.79 lbs)	688 g (1.52 lbs)	720 g (1.59 lbs)	817 g (1.80 lbs)
Power Input	IEEE 802.3at Power over Ethernet (PoE) on LAN 1 Power adapter: 12 V DC, 2.5 A	IEEE 802.3at Power over Ethernet (PoE) on LAN 1 Power adapter: 12 V DC, 2 A	IEEE 802.3at Power over Ethernet (PoE) on LAN 1 Power adapter: 12 V DC, 2.5 A	IEEE 802.3at Power over Ethernet (PoE) on LAN 1 Power adapter: 12 V DC, 2.5 A

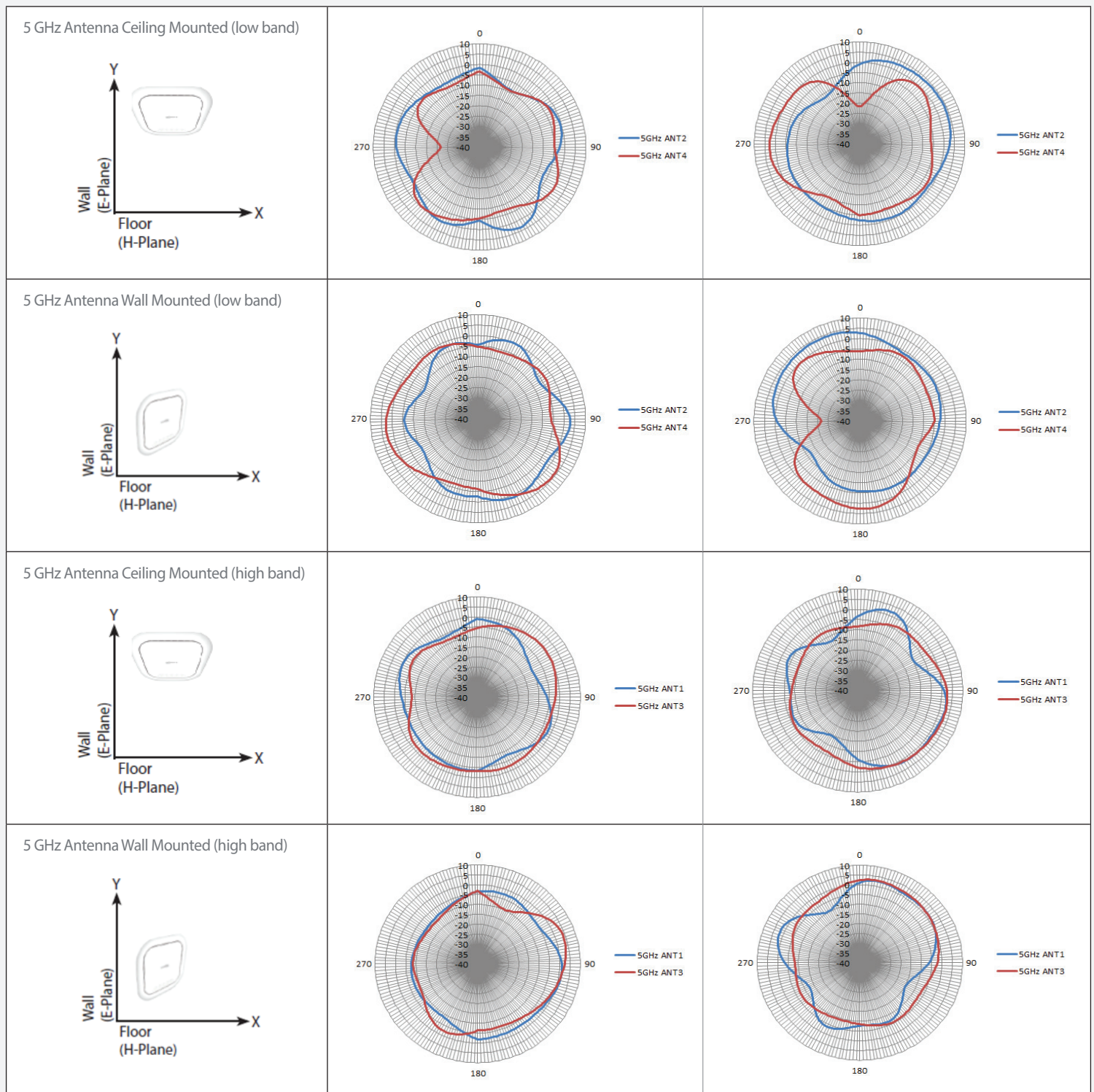
Power Consumption (PoE / Power adapter)	PoE: 19.68 W Power adapter: 16.92 W	PoE: 17.28 W Power adapter: 16.32 W	PoE: 20.16 W Power adapter: 18.96 W	PoE: 21.65 W Power adapter: 19.2 W
Temperature	Operating: 0 to 40 °C (32 to 104 °F) Storage: -20 to 65 °C (-4 to 149 °F)			
Humidity	Operating: 10% to 90% non-condensing Storage: 5% to 95% non-condensing			
Mean Time Between Failure (MTBF)	548,000 hours	891,000 hours	485,000 hours	454,000 hours
Mounting Options	Ceiling mount Wall mount Desktop (horizontal)			
Certifications	CE Class B FCC Class B UL UL2043 IC Class B			

Antenna Pattern - DBA-2520P

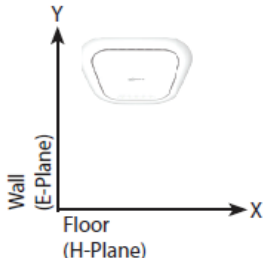
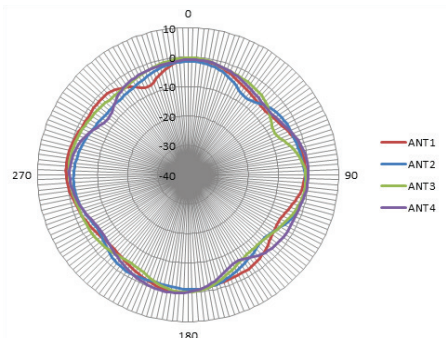
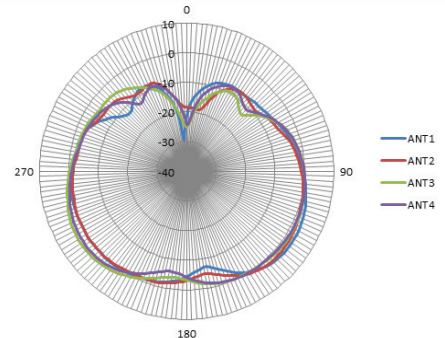
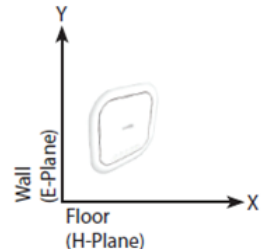
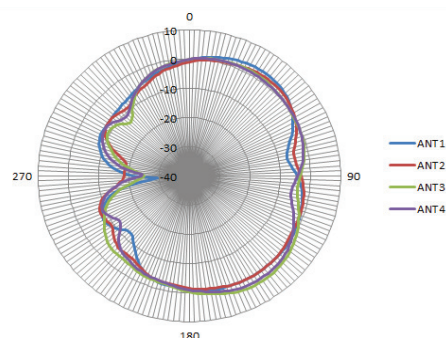
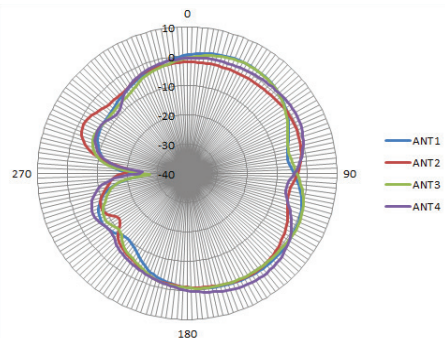
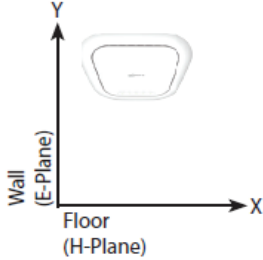
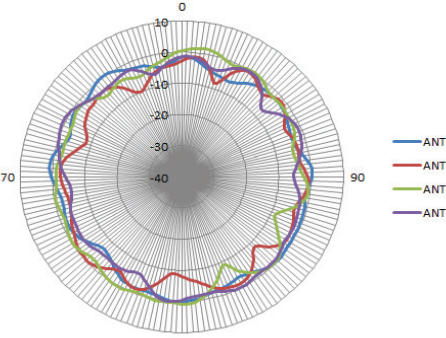
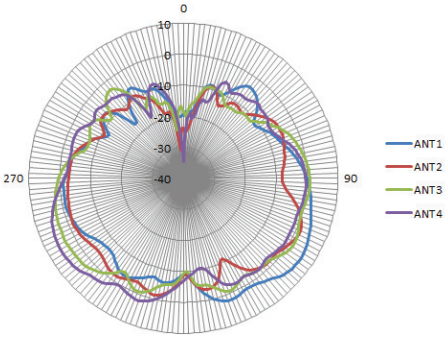
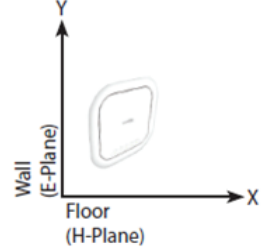
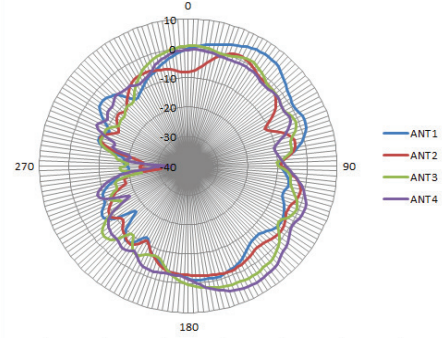
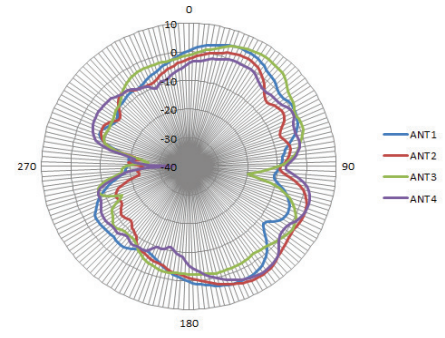
Orientation	H-Plane	E-Plane
2.4 GHz Antenna Ceiling Mounted 		
2.4 GHz Antenna Wall Mounted 		







Antenna Pattern - DBA-2820P

Orientation	H-Plane	E-Plane
<p>2.4 GHz Antenna Ceiling Mounted</p> 		
<p>2.4 GHz Antenna Wall Mounted</p> 		
<p>5 GHz Antenna Ceiling Mounted</p> 		
<p>5 GHz Antenna Wall Mounted</p> 		

Warranty	
Warranty	Limited Lifetime Warranty
Order Information	
DBA-WW-Y1-LIC	1 Year Cloud License
DBA-WW-Y3-LIC	3 Year Cloud License
DBA-WW-Y5-LIC	5 Year Cloud License
Order Information	
Part Number	Description
DBA-2520P	Nuclias Cloud-Managed AC1900 Wave 2 Access Point
DBA-2620P	Nuclias Cloud-Managed AC1300 Wave 2 Smart Antenna Access Point
DBA-2720P	Nuclias Cloud-Managed AC2200 Wave 2 Tri-Band Access Point
DBA-2820P	Nuclias Cloud-Managed AC2600 Wave 2 Access Point

¹ Active D-Link Nuclias account and valid device license required.

² Maximum wireless signal rate derived from IEEE Standard 802.11g, and 802.11n specifications. Actual data throughput will vary. Network conditions and environmental factors, including volume of network traffic, building materials and construction, and network overhead, lower actual data throughput rate. Environmental factors will adversely affect wireless signal range.

August 5, 2020