

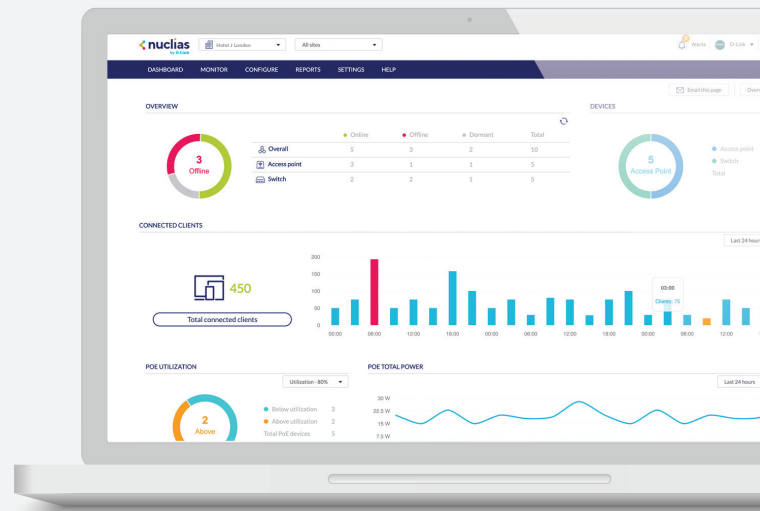
# Nuclias Cloud-Managed AC 1300 Wave 2 Outdoor Access Points

DBA-3620P & DBA-3621P



## Nuclias Cloud Overview

Nuclias Cloud is D-Link's complete, cloud-managed networking solution. It allows organizations with any level of IT resources the convenience of simple network deployment and configuration. Management and monitoring is as easy as ever. Troubleshooting is quick and painless. With Nuclias Cloud, scaling is accessible and can be done on an ad hoc basis. It's professional-grade networking, without the need for networking professionals.



▲ Intuitive Dashboard Interface

## Solution Features

- » Cloud Management
- » Zero-Touch Deployment
- » Intuitive Interface
- » Unlimited Scalability
- » Real Time Traffic Reporting & Analytics
- » Device Geolocation with Google Maps
- » Visualized Floor Maps
- » Automated Monitoring & Alerts
- » Multi-Tenant & Role-Based Administration
- » Band Steering
- » Bandwidth Optimization
- » Searchable Event Log and Change Log
- » Auto Channel Management
- » Authentication via Customizable Captive Portal, 802.1x and RADIUS Server
- » Social Login for Guest Wi-Fi Access
- » End-to-End Encryption
- » Over-the-Air Firmware Upgrades

## Solution Benefits

### 1 / End-to-End Solution

Nuclias Cloud is a complete Cloud-based WLAN infrastructure solution that provides end to end control over every network device, on any site, in your cloud-managed network. D-Link's wide range of compatible devices offer a variety of capabilities at different price points. As a business driven solution, Nuclias includes a variety of enterprise tools. A customizable captive portal allows for a branded Wi-Fi experience, while reporting & analytics provide you the opportunity to better understand your network.



## 2 / Cloud Management

Cloud-based network management offers the flexibility and convenience you need. Admins can carry out various tasks using D-Link's centralized management platform via browser or app, anywhere with an internet connection. Unlimited device and site scalability, along with multisite management, allow you to manage a worldwide network from a centralized location. Zero Touch Deployment does away with repetitive device configuration by remotely pushing settings to devices. Furthermore, devices can be managed in batches or individually for more precise control. These features, plus more, all consolidated on a unified platform make management as simple and as hassle-free as it should be.



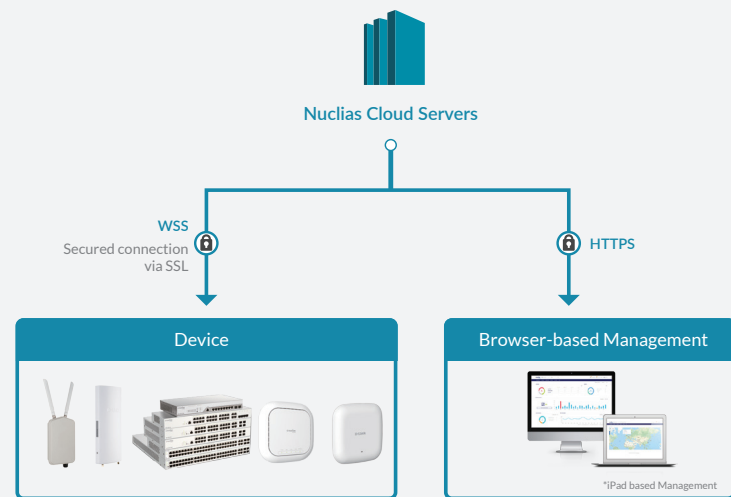
▲ Deployment Scenarios

## 3 / In-Depth Analytics & Automated Reporting

Nuclias Cloud delivers a deeper understanding of your network and its users through automated traffic analytics and status reports. Traffic can be viewed on a network-wide scale, or down to individual devices. Insights derived from these reports can be used to further drive business value.

## 4 / Peace-of-Mind

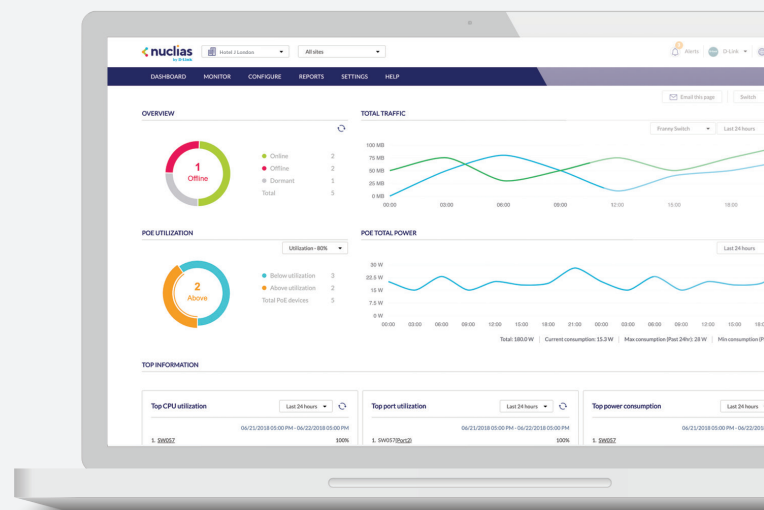
Nuclias Cloud carries a 99.9% reliability SLA (Service Level Agreement) that ensures a constant access to cloud services. Device operation will not be interrupted in the event that cloud services are unavailable. End to end encryption, role & privilege-based access control, amongst a host of other security features work together to preserve the integrity of your network. Automation capabilities provide an additional level of convenience, including control of network parameters, alerting, reporting and firmware updates.



▲ End-to-End Encryption

## 5 / Ease of Use

Nuclias Cloud has an intuitive interface that is designed to maximize your productivity. Admins can access easy to grasp, at-a-glance details of their network environment. Batch configuration and multitenancy support streamlines administrators' work. Meanwhile, social-login, airtime fairness and bandwidth priority make life easier for users.



▲ Statistics - Network Analytics

## Product Overview

The DBA-3620P & DBA-3621P Nuclias Cloud Managed AC1300 Wave 2 Outdoor Access Points are deployed as a pre-managed, zero-configuration access point controlled through the D-Link Nuclias Cloud<sup>1</sup>. These are the best-in-class outdoor access points designed specifically for enterprise environments. With next-generation 802.11ac Wave 2 dual-band concurrent 2.4 GHz and 5 GHz radios, the DBA-3620P & DBA-3621P offer high combined data rates to wireless clients and wide-ranged wireless connectivity. With an impressive protection rating to defend against dust and water, the DBA 3620P & 3621P are equipped to withstand almost any outdoor environment.

### Best-in-Class Built for Enterprise AP

- IEEE 802.11ac Wave 2 wireless<sup>2</sup>
- Supports IEEE 802.3af Power over Ethernet (PoE)
- IEEE 802.3az Energy-Efficient Ethernet (EEE)
- Integrated DHCP server
- Allows a high number of concurrent users

### Robust Build

- The DBA-3620P holds an IP55 rating
  - Protected against any quantity of dust that could interfere with operation, but not fully dust tight
  - Completely protected against solid objects
  - Protection assured against water jets project by a nozzle (6.3mm) from any angle
- The DBA-3621P holds an IP67 rating
  - Fully dust tight
  - Completely protected against solid objects
  - Protected against water immersion at a depth between 15 cm and 1 meter for maximum 30 minutes

### Enterprise Security

- Personal and Enterprise versions of WPA/ WPA2 (802.11i) along with latest 128/192-bit Personal/Enterprise wireless encryption
- SSID/Guest/Station Isolation
- IP/MAC address filtering
- Captive Portal (Facebook, Google, Line, Weibo, E-mail authentication, SMS)
- Supports RADIUS client and cipher negotiation

### 11 AC Wave 2 MU-MIMO

- 2x MU-MIMO antenna with two spatial streams
- Perfect for 'Multi-User', 'Multi-Input', 'Multi-Output' environments
- Significantly reduces network congestion
- Utilizes beamforming to direct signal at intended wireless device

## Technical Specifications

### General

Model	• DBA-3620P	• DBA-3621P
Interfaces	<ul style="list-style-type: none"> <li>• 1 x 10/100/1000 Mbps Ethernet port               <ul style="list-style-type: none"> <li>• 1 x RJ45 Console port</li> </ul> </li> <li>• IEEE 802.11a/b/g/n/ac Wave 2 wireless</li> </ul>	
Ethernet Interface	• 1 x 10/100/1000 BASE-T LAN Port	
Standards	<ul style="list-style-type: none"> <li>• IEEE 802.11a/b/n/g/ac Wave 2</li> <li>• IEEE 802.3az Energy-Efficient Ethernet (EEE)</li> <li>• IEEE 802.3af Power over Ethernet (PoE)               <ul style="list-style-type: none"> <li>• IEEE 802.3i/u/ab</li> </ul> </li> <li>• IEEE 802.3x Flow Control</li> </ul>	
Antenna	<ul style="list-style-type: none"> <li>• Built-in internal omnidirectional antenna               <ul style="list-style-type: none"> <li>» 2.4 GHz: 3.5 dBi</li> <li>» 5 GHz: 5 dBi</li> </ul> </li> <li>• 2 x R-SMA connectors for external antennas</li> </ul>	<ul style="list-style-type: none"> <li>• 2 x external Type-N antennas               <ul style="list-style-type: none"> <li>» 2.4 GHz: 3.5 dBi</li> <li>» 5 GHz: 5 dBi</li> </ul> </li> </ul>
Data Signal Rate <sup>2</sup>	<ul style="list-style-type: none"> <li>• 2.4 GHz: Up to 400 Mbps</li> <li>• 5 GHz: Up to 867 Mbps</li> </ul>	

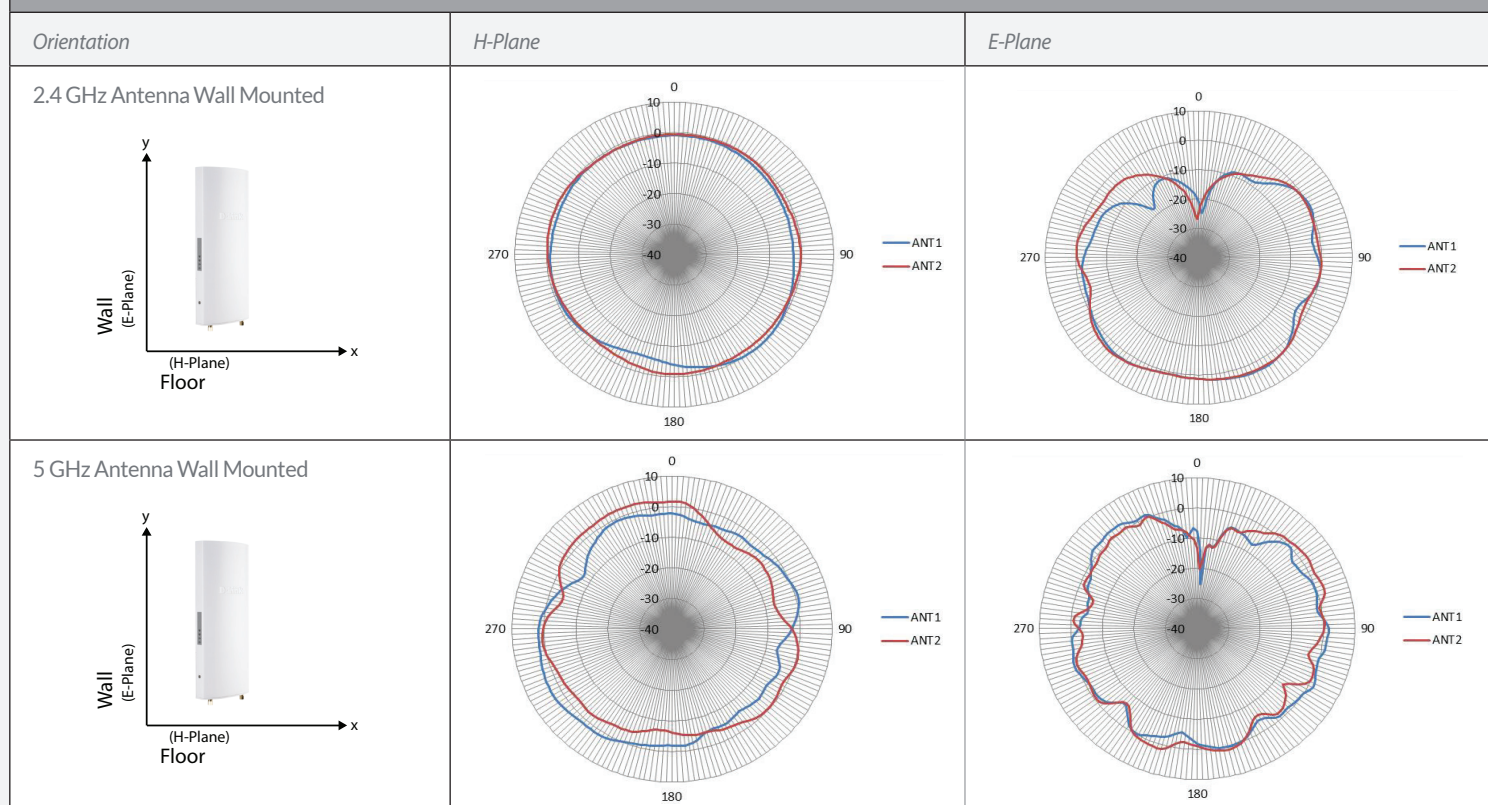
### Functionality

Security	<ul style="list-style-type: none"> <li>• Latest 128/192-bit Personal/Enterprise wireless encryption               <ul style="list-style-type: none"> <li>• MAC address filtering</li> <li>• SSID isolation</li> <li>• Guest isolation</li> <li>• Captive portal</li> <li>• Station isolation                   <ul style="list-style-type: none"> <li>• SAE</li> <li>• AES</li> </ul> </li> </ul> </li> </ul>	
Maximum SSIDs	<ul style="list-style-type: none"> <li>• Up to 16 SSIDs per device</li> <li>• Up to 8 SSIDs per wireless band</li> </ul>	

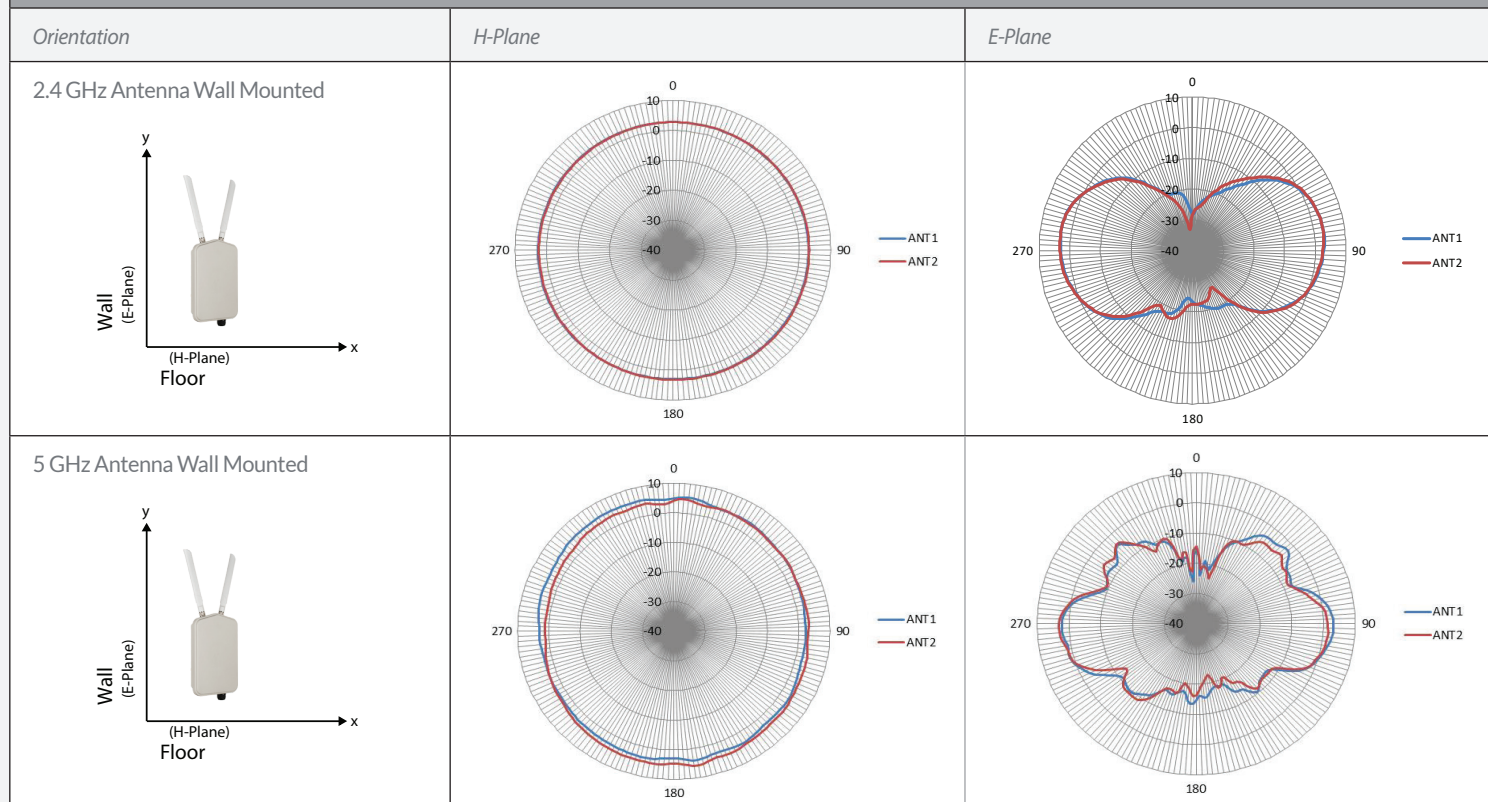
### Physical

Dimensions	• 291.9 x 115 x 65.5 mm (11.49 x 4.53 x 2.57 in)	• 460 x 160 x 79.5 mm (18.11 x 6.3 x 3.12 in)
Weight	<ul style="list-style-type: none"> <li>• 0.822 kg (1.81 lbs) without bracket</li> <li>• 0.853 kg (1.88 lbs) with bracket</li> </ul>	• 1.38kg (3.04 lbs) without bracket
Power Input	• IEEE 802.3af Power over Ethernet (PoE)	
Power Consumption	• PoE: 13.5 W	
Temperature	<ul style="list-style-type: none"> <li>• Operating: -40 to 50 °C (-40 to 122 °F)</li> <li>• Storage: -40 to 65 °C (-40 to 149 °F)</li> </ul>	<ul style="list-style-type: none"> <li>• Operating: -40 to 60 °C (-40 to 140 °F)</li> <li>• Storage: -40 to 65 °C (-40 to 149 °F)</li> </ul>
Humidity	<ul style="list-style-type: none"> <li>• Operating: 10% to 90% non-condensing</li> <li>• Storage: 5% to 95% non-condensing</li> </ul>	
Mean Time Between Failure (MTBF)	• 1,142,136 hours	• 1,305,297 hours
Mounting Options	<ul style="list-style-type: none"> <li>• Pole mount</li> <li>• Wall mount</li> </ul>	<ul style="list-style-type: none"> <li>• Pole mount</li> <li>• Wall mount</li> </ul>
Certifications	<ul style="list-style-type: none"> <li>• CE Class B</li> <li>• FCC Class B</li> <li>• UL</li> <li>• IC Class B</li> </ul>	<ul style="list-style-type: none"> <li>• CE Class B</li> <li>• FCC Class B</li> <li>• UL</li> <li>• IC Class B</li> </ul>

## Antenna Pattern - DBA-3620P



## Antenna Pattern - DBA-3621P





Order Information	
Part Number	Description
DBA-3620P	Nuclias Cloud-Managed AC1300 Wave 2 Outdoor Access Point
DBA-3621P	Nuclias Cloud-Managed AC1300 Wave 2 Outdoor Access Point

September 1, 2021 3:41 PM

<sup>1</sup> Active D-Link Nuclias account and valid device license required.  
<sup>2</sup> Maximum wireless signal rate derived from the IEEE Standard 802.11ac specifications. Actual data throughput will vary. Network conditions and environmental factors, including volume of network traffic, building materials and construction, and network overhead, lower actual data throughput rate. Environmental factors will adversely affect wireless signal range.